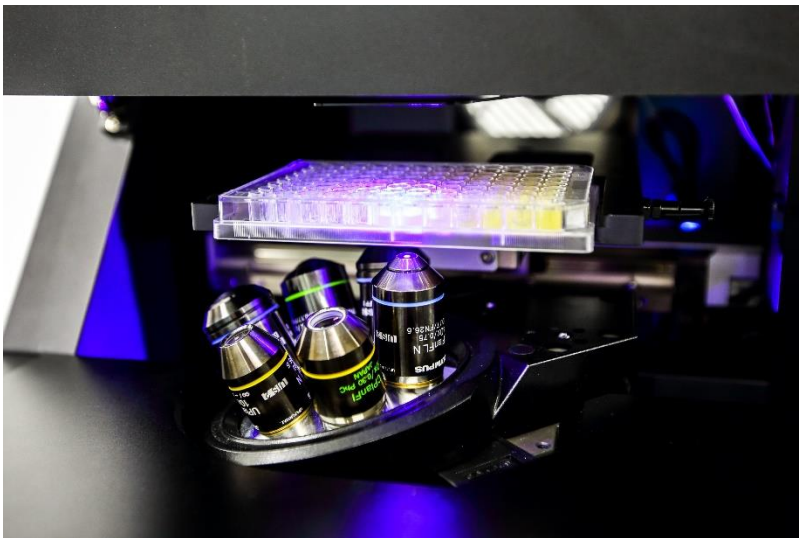
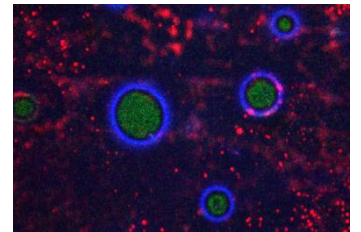
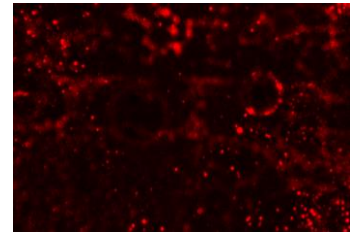
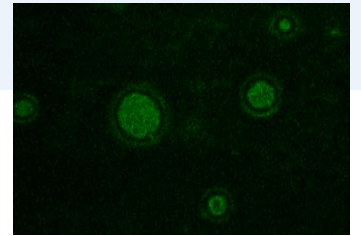
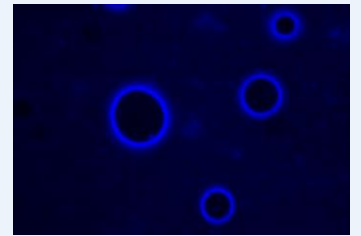




# F1-CIS

Automated  
Cell Imaging System





**F1-CIS**  
- Cover closed for blocking the light

## Features and Benefits

- Inverted fluorescence microscope
- Built-in dark room chamber
- 5 color fluorescence imaging
- Bright field imaging
- Automated X,Y,Z Stage
- Automated revolving turret
- Automated filter wheel changer
- Automated objective lens changer
- Slide glass, Well plate, Petri dish compatible



< Customized sample plates >

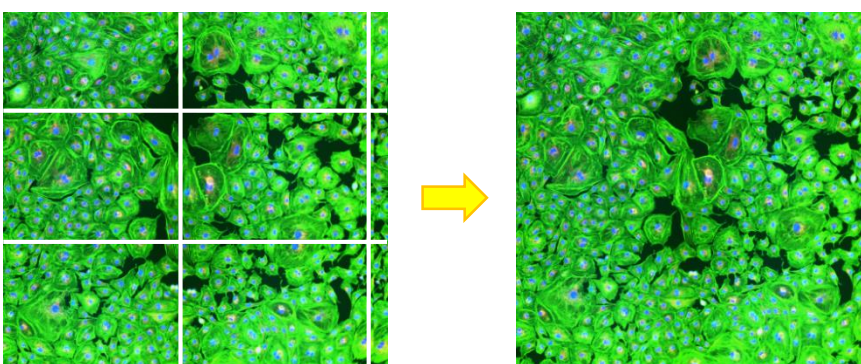
## Automated Well Plate Scanning

- Image stitching for large area
- Automatic well plates imaging
- For standard well plate (96, 384, etc. well)



< Jog dial for sample control >

## Stitching image



Stitching images before boundary processing

Stitching image after boundary processing

### Imaging conditions

- 20x objective lens
- 3 fluorescence color
- Part of stitched area 3x2mm (4x4 images)
- Imaging time : 68 sec

## Specifications

<b>Optical system</b>	Automated Cell Imaging System, <b>F1-CIS</b>
<b>Imaging method</b>	Fluorescence, Brightfield
<b>Excitation source</b>	High power LEDs (Center wavelength : 375nm, 470nm, 530nm, 625nm) White light source for brightfield imaging
<b>Number of imaging pixels</b>	2448x2048 pixels (5M pixels Scientific-grade color image)
<b>Filter Cube</b>	DAPI, GFP, RFP, CY5 (Customizable up to 5 fluorescence imaging channels)
<b>Imaging channels</b>	5 channels (by automatic filter changer)
<b>Camera</b>	Color / Monochrome
<b>Automated hardware</b>	XY stage (120x75mm, Covering full range of well plates) Focus stage (15mm), Filter changer (5 filters) LED changer (5 LEDs), LED shutter, LED brightness control Objective lens revolving turret
<b>Automated functions</b>	Large area stitching, Full focus stitching Auto focus, Time lapse
<b>Sample holder</b>	Well plate (384, 96, etc.) Slide glass, Petri dish, etc.
<b>Objective lens</b>	4x, 10x, 20x, 40x, 60x, 100x (including oil immersion lens)
<b>Accessory</b>	X,Y,Z stage Jog dial & Nosepiece controller
<b>Size</b>	360 x 500 x 500 [WxDxH] (mm)